

Afri-Stream55 Supreme 24



Lithium Titanate Oxide Battery

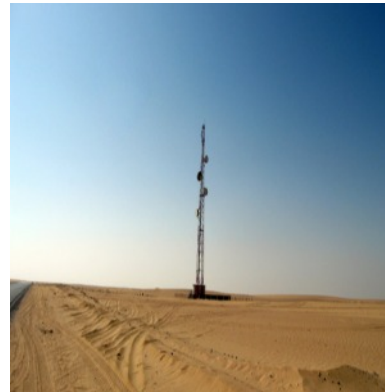
Product Data Sheet

Battery Overview

This heavy duty, high capacity battery is designed to produce maximum capacity whilst still being extremely durable to withstand the robust environments within which these batteries will be utilized.

They can handle all the bumps and knocks that they will be exposed to, tested to withstand forces in excess of 50G without damage. The battery enclosure is also fire retardant for up to 30 minutes. The quick charge capability ensures minimal downtime, if any, at maximum availability (100%) to the client to ensure optimal productivity.

The batteries operating temperatures ensures availability in any environment, accommodating extreme negative and positive temperatures as shown in the data sheet.



Main Features

- IOT Enabled
- Long cycling performance
- High Safety
- Fast charge
- Long cycle life – 20 000-30 000
- Wide temperature range
- Active Cell balancing
- Active Tracking
- Active movement sensing
- Active charge and discharge recording
- Cloud access for tracking recovery and performance data
- Integrated CAN-Bus system

Suitable For

- Suitable for GSM and radio communication installations



Battery Specifications		Afri-Stream55 Supreme 24
Battery Modules		LTO-55AH-SUP24
Chemical Technology		Lithium Titanate Oxide
Chemical Composition		Li_2TiO_3
Nominal Battery Capacity		55 Ah
Nominal Battery Voltage		25.3VDC
Working Efficiency		0.94
Charge current		Standard Charging / Discharging: 0.5C (27.5 A)
Standard Charging method		CCCV
Charging time		Standard Charge at 27.5A (0.5C): 2 hours Fast Charge at 275A (5C): 15 Minutes Rapid Charge at 550A (10C) > 10 Minutes
Charging (CC-CV)	Maximum Charge Current	10C
	Charge Upper Voltage Limit	30.8V
Discharge	Maximum Discharge Current	10C
	Charge Lower Voltage Limit	16.5.5V
Charging Time	Standard Charging	0.5H
	Quick Charging	0.2H
Operational Thermal Ambient	Charging	-40°C ~ 65°C
	Discharging	-40°C ~ 65°C
Storage Thermal Ambient	Short-Term (1 Month)	-40°C ~ 65°C
	Long-Term (Within 1 Year)	-40°C ~ 65°C
Storage Humidity		<70%
Battery Terminals		M12 Threaded
Terminal Maximum Torque rating		14Nm
Battery Weight		29Kg
Battery Dimension		230.8x298x334mm
Cycle Life		> 25 000 times
Embedded Communication		Wi-Fi 802.11 b/g/n, GPS and LBS Positioning, GSM & GPRS, Globalstar's LEO satellite coms

