



KOREA INDUSTRIAL COMPLEX CORP.

39 Cheomdan-ro, Dong-gu, Daegu 41068 Tel. +82-70-8895-7000 <http://www.kicox.or.kr>

CREATING HAPPY INDUSTRIAL COMPLEXES
WHERE INDUSTRY, TECHNOLOGY AND CULTURE COEXIST



www.kicox.or.kr



The Wave of Innovation

- 06 CEO Message
- 10 KICOX History

The Motive Power Main Business of KICOX

- 14 Revolutionizing Aging Industrial Complexes
- 16 Fostering the Industrial Cluster
- 18 Integrated Support Services for Enterprise Growth
- 20 Development of Eco-Friendly/High-Efficient Industrial Complexes
- 22 Reinvigorating the Local Economy
- 24 Demand Driven Industrial Complex Development
- 26 Providing Employee Welfare and Facilities for SMEs
- 28 Analysis of Industrial Trends and Research on Industrial Policies

Industrial Complex Jurisdiction

- 32 Seoul Regional Headquarters
- 33 Incheon Regional Headquarters
- 34 Gyeonggi Regional Headquarters
- 35 Daegu Gyeongbuk Regional Headquarters
- 36 Gwangju Jeonnam Regional Headquarters
- 37 Gyeongnam Regional Headquarters
- 38 Chungcheong Regional Headquarters
- 39 Jeonbuk Regional Headquarters
- 40 Busan Regional Headquarters
- 41 Ulsan Regional Headquarters
- 42 Gangwon Regional Headquarters

With KICOX

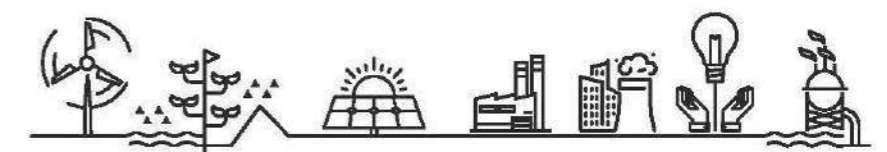
- 44 About the Organization



CREATING HAPPY INDUSTRIAL COMPLEXES
WHERE INDUSTRY, TECHNOLOGY AND CULTURE COEXIST



www.kicox.or.kr



THE WAVE OF INNOVATION IS STARTING IN INDUSTRIAL COMPLEXES WITH KICOX

KICOX provides
expert management and support service
for industrial complexes

From supporting and managing 4 complexes in 1964
to 63 complexes now,
we have cemented our position as experts.

KICOX believes the power underpinning the Korean
economy is in industrial complexes and constantly grows
while sending a wave of innovation through those complexes.



1,189 industrial complexes
across the country

44 national complexes, 650 general complexes, 27 urban
high-tech complexes, 468 agricultural complexes :
1,189 complexes in all (as of the end of 2017)

63 KICOX managed complexes

33 national complexes, 13 general complexes, 15 foreign
investment zones, 2 agricultural complexes managed
(as of the end of 2017)

51.8% Status of Industrial Complexes
Managed by KICOX

Industrial complexes managed by KICOX
Account for 51.8% of production, 46.1% of exports and 49.4% of
employment of the industrial complex of KOREA
(as of the end of 2017)

INDUSTRIAL DEVELOPMENT COMES FROM THE COMBINED POWER OF PEOPLE AND TECHNOLOGY, INDUSTRY AND CULTURE

KICOX focuses on the people and companies within industrial complexes

We promote diverse methods of support and policies to create working opportunities and a working environment so companies can grow.

We build clusters together with people, companies, and organizations and pursue efficient management with industry and culture developing together to make happy industrial complexes.

Expanding available space in cutting-edge integrated complexes

- Creating an environment of innovation in aging industrial complexes
- Developing industrial complexes to meet demand
- Improving infrastructure and cultural life

Building creative, innovative clusters

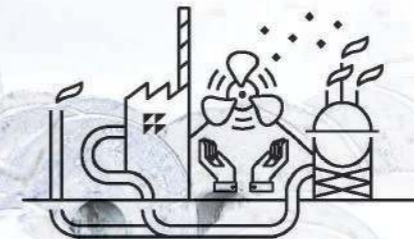
- Improvement of Industry-Academia-Research-Government networks
- Building open, creative innovation systems
- Establishment of eco industrial park and reducing greenhouse gases

Revolutionizing business development support

- Building platforms for integrated support for business growth
- Innovating in terms of industrial complex safety and occupant management
- Providing expertise in factory setup and investment support services

Building sustainable management systems

- Increasing competence in pursuit of core business Improving rationalization and management efficiency
- Taking social responsibility with coexistence



CEO Message



KICOX will take
a leading role in Korea's
development through its
industrial complexes.

BUSINESS POLICIES



Korea has grown from a destitute country to the world's 9th largest trading power and 11th largest economy through industrial complex policies based on national economic growth.

For Korean economy to move forward to the next level, it is necessary for industrial complexes to enhance its competitiveness and respond to changes in economic environment while creating more job opportunities.

KICOX plans to expand the support, welfare and convenience facilities workers need and improve cultural and living conditions to build attractive industrial complexes through innovation.

We aim to draw out corporate potential to transform industrial complexes such that jobs are created and new industry grows through enhancing cooperation between complexes and reinvigoration Industry·Academy·Research·Government networks and support tailored to each stage of business in order for our occupants to grow.

We will implement training for understanding and increased awareness of the 4th industrial revolution and consult on major government and public business support programs, including R&D, IoT, big data and AI to increase our occupants' global competitiveness.

We will form the center of the 4th industrial revolution in Korea by leading industrial innovation and creating jobs in our valuable national resource, industrial complexes, through our hard work and passion.

01 Mission

We take a leading role in national industrial development and job creation by supporting corporate growth and optimal industrial complex development.

02 Vision

Serve as an expert of innovative industrial complex where industry, technology and culture coexist.

03 Core values

- Creative thinking
- Advanced Service
- Social responsibility

KICOX CEO | Hwang Kyu-yeon

The Wave of Innovation

THE WIND OF INNOVATION IS BLOWING ACROSS KOREA, MAKING A GREAT FUTURE

KICOX is generating waves of innovation to develop
the driving force of growth leading the 4th industrial revolution.
With the wind of innovation at its back,
Korea is moving toward its future with broader potential.



KICOX was founded in 1964 as an organization that specializes in managing and supporting industrial complexes by integrating 5 regional industrial complex management groups.

HISTORY

1960 -



1971

Jungbu Industrial Complex Management Corporation established
Gumi Complex managed



1974

Dongnam Industrial Complex Management Corporation established
4 complexes managed including Changwon and Ulsan

1990

Seonam Industrial Complex Management Corporation established
4 complexes managed including Yeosu and Gwangju



1998-1999

5 more complexes managed including Paju Publishing, Myeongji Noksan and Daebul



2003

3 more complexes managed including Gumi Foreign Investment Zone and Osong Life Science Complex



2004

Industrial Complex Cluster Promotion Organization established



2006

Selected as exclusive organization for Eco industrial park



2007-2008

9 more complexes managed including Dalseong 2
- 5 more complexes managed including Dalseong 2, Donghwa, and Samgye, Ecology Industrial park Program started
- 4 more complexes managed including Icheon Janghowon, Busan Science and Sinpyeong Jangrim [cooperation]



2014

The 50th anniversary of industrial complex Headquarters moved to Daegu Innovation City



1960

1970

1990

2000

2005

2010

1964

Korean Industrial Export Corporation established
4 complexes managed including Guro and Namdong



1977

Seobu Industrial Complex Management Corporation established
4 complexes managed including Banwol and Sihwa



1997

Korea Industrial Complex Corporation established



2005

Inju Foreign, Iksan Complex also managed
Industrial Complex Cluster program started

2010

Wonju/Munmak, Yangju Hongjuk Industrial Complex also managed

2013

Daegu, Cheonan 5 Foreign Investment Zone also managed



2015

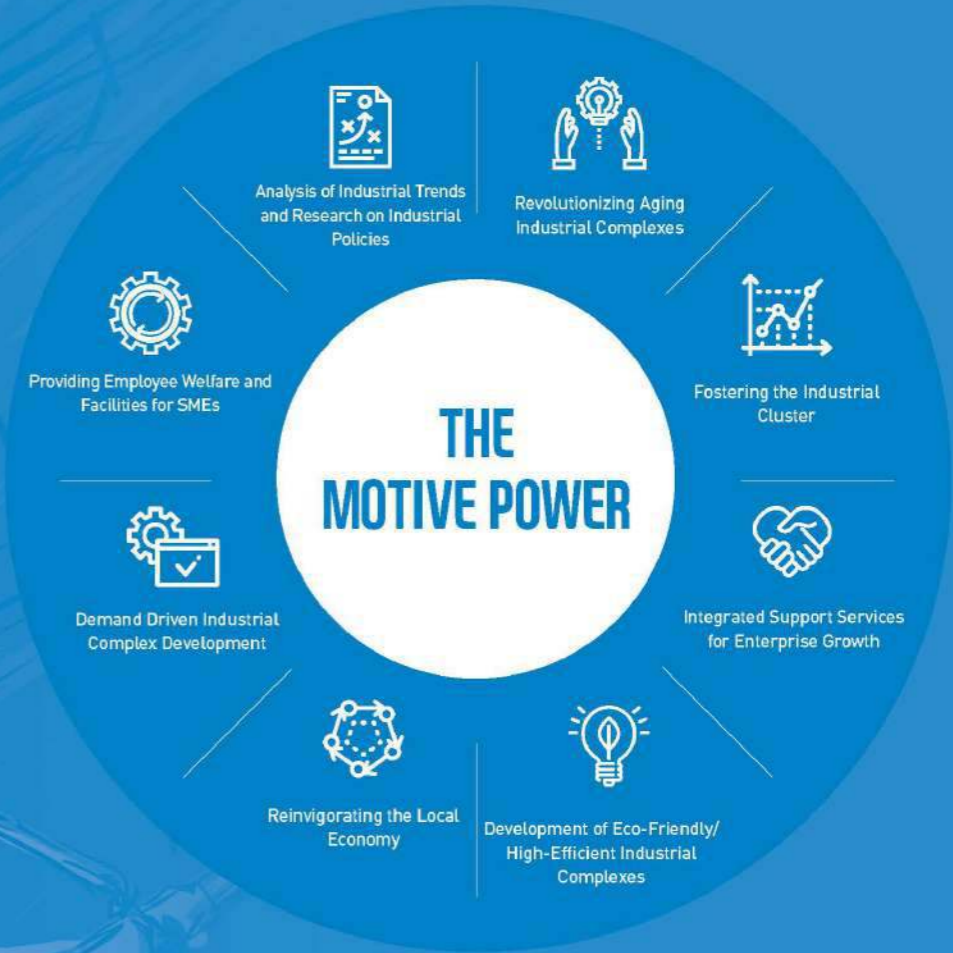
World Cluster Competitiveness General Assembly (TCI Global Conference)

2016

Selection of 17 innovative industrial complexes completed

CHARTING A COURSE FOR KOREA'S INDUSTRIAL FUTURE

KICOX is the coxswain leading Korean industry and its economic paradigm.



KICOX plans the fusion and development of business and people, technology and industry acting as a powerful driving force leading Korea's industrial future.



Aging industrial complexes
are made into spaces for
creativity and innovation.

REVOLUTIONIZING AGING INDUSTRIAL COMPLEXES

Revolutionizing aging industrial complexes means upgrading structures to improve the complexes' features and make businesses more competitive.

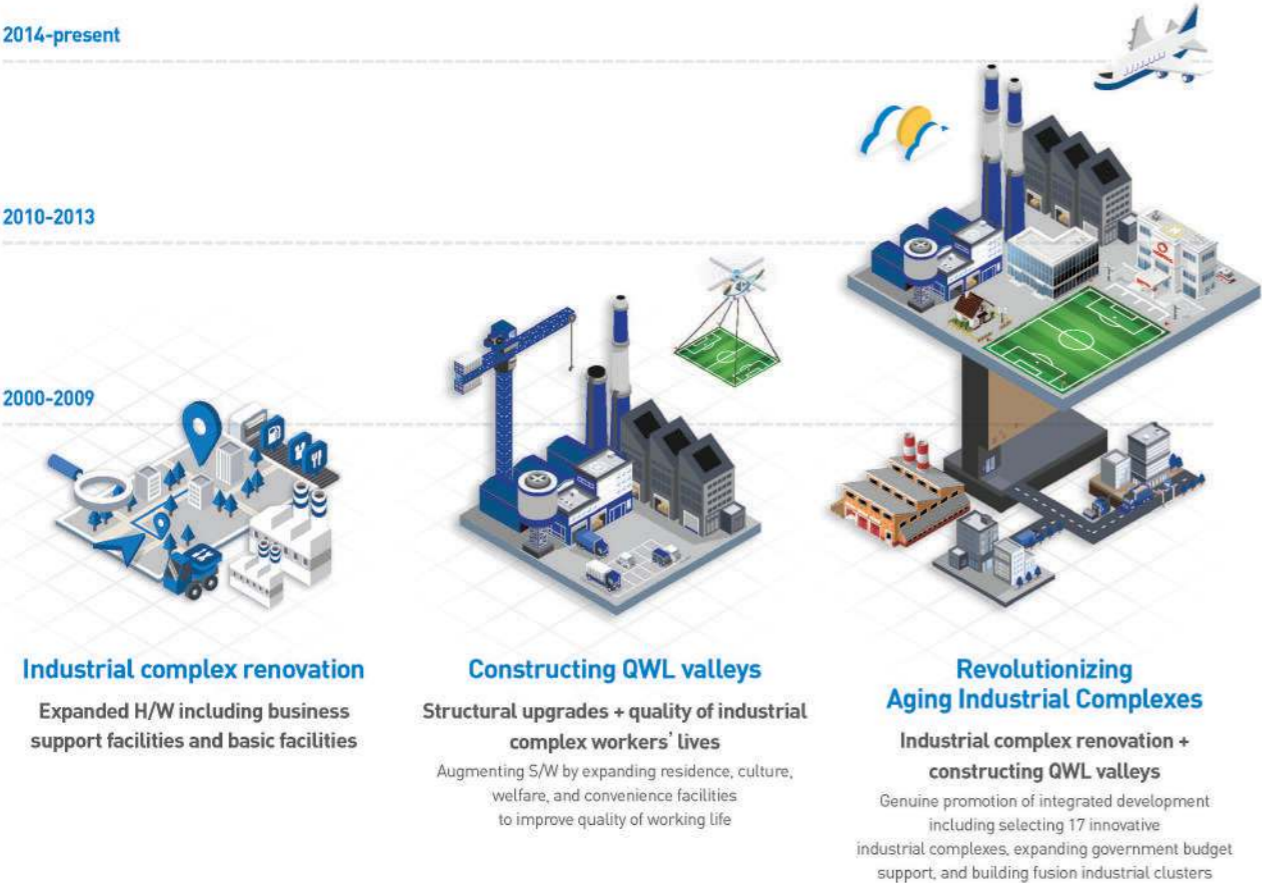
We expand culture, welfare and convenience facilities to increase innovation and support and improve the working environment to add value and modernize occupants' work.

Through this, we lead the creation of new and cutting-edge industry and build creative, innovative spaces to attract young talent.

2014-present

2010-2013

2000-2009



Creating innovative spaces

Selected 17 innovative industrial complexes

Providing space for new growth industries using closed or vacant spaces in industrial complexes
Building fusion industrial clusters integration production, training and research



Increasing innovation capability

Integration support

Integrating business support facilities such as comprehensive business centers, research organizations, universities, and knowledge service organizations into complexes to promote particular industries and support upgrades



Building innovative environments

Expanding culture, welfare and convenience facilities

Building industrial complexes where life and work coexist by improving the employment and settlement environments by adding cultural centers, daycares, accommodations, industrial accident prevention facilities, recreation facilities and convenience facilities



Examples of excellence

Integrating industry, education, R&D, residence, convenience, and welfare facilities to create synergy

Facilities introduced: knowledge industry centers, university campuses, innovation support centers, accommodations, convenience facilities, community centers, daycare, etc.



Building an integrated industrial cluster (Changwon)

Improved the working environment and productivity by integrating plating and PCB industries and introducing joint facilities to increase business competitiveness

Cost reduction: installation of joint wastewater processing plants reduced wastewater processing costs by 40%, renewable energy supply by recycling exhaust steam reduced energy costs by 50%community centers, daycare, etc.



Integrated plating/PCB industries (Banwol/Sihwa)

Achievement

Promoted 141 projects including complex environment improvement fund and private agency to invest 2.8 trillion won ('10-'16)
"Special Law to Promote Activity and Increase Competitiveness of Aging Industrial Complexes" drafted ('15. 01) and enacted ('15. 07)

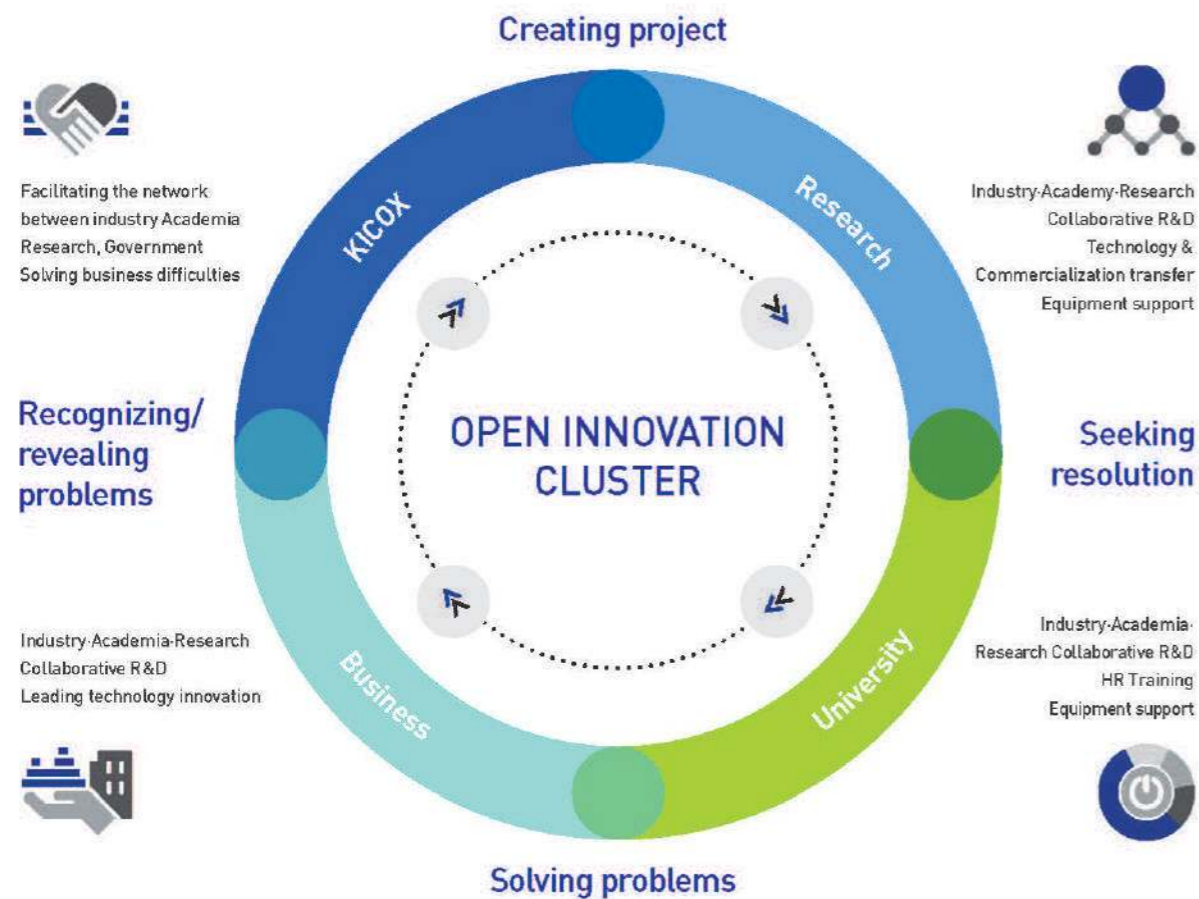


Enhancing business competitiveness through Industry-Academia-Research cooperation.

FOSTERING THE INDUSTRIAL CLUSTER

KICOX is committed to reinforcing the competitiveness of the industrial clusters by building integrated networks sharing knowledge and information between businesses, universities, research organizations and support institutions.

We exert the full capabilities to help the businesses improve their potentials for technical development, technology transfer, marketing and commercialization.



Mini-Cluster Program

Supporting network building and collaborative projects for Industry-Academia-Research cooperatives

100 Industry-Academia-Research cooperatives
88,123 networking projects (2005~2017)

Industry-Academy-Research R&D and commercialization

Acquired top evaluation in national R&D

Supporting convergence projects between industries

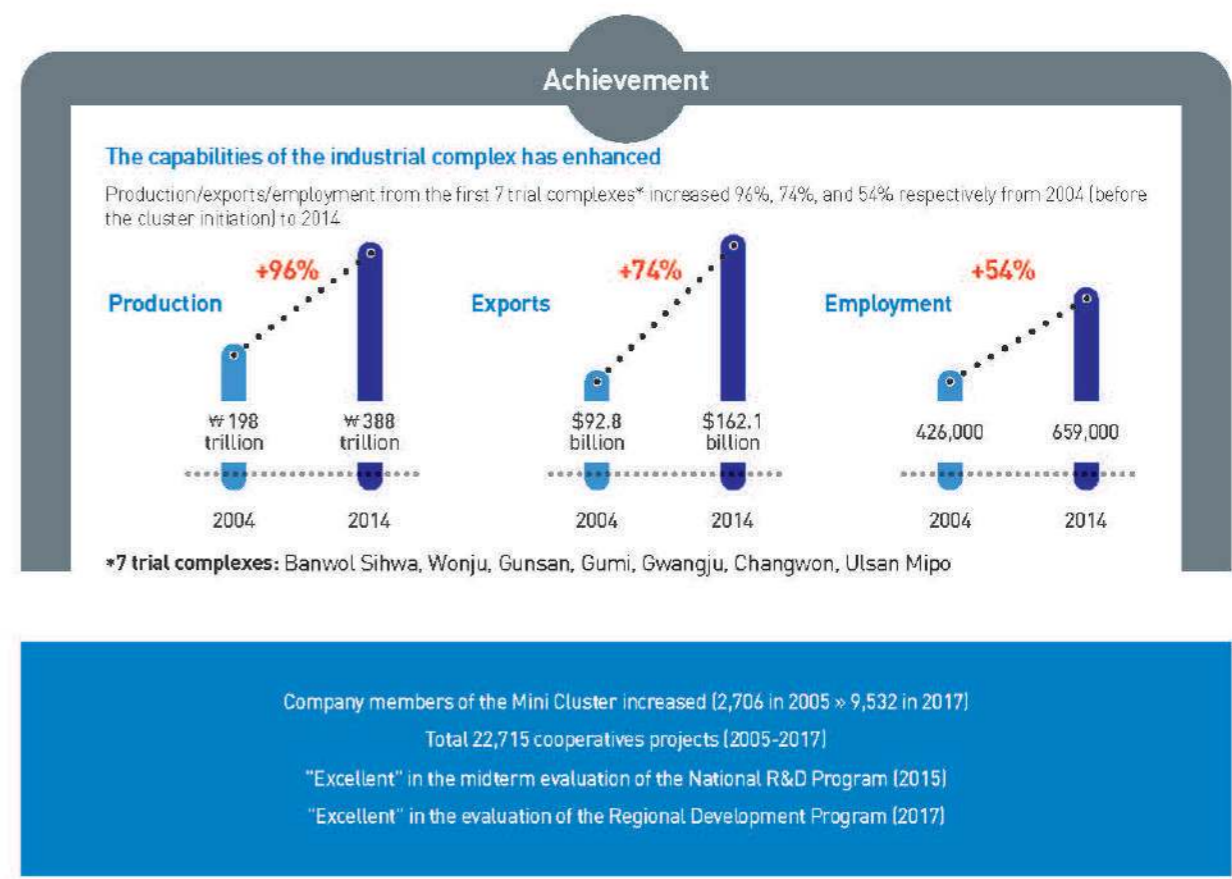
Support for transfer and commercialization of leading university/research technology

Business Growth Support Center

Supporting the growth of promising SMEs in the industrial complexes

Ongoing on-site expert consulting for technical, managerial and financial difficulties

Over 80 expert consultants in 7 regional centers





All aspects of business management
We provide integrated support services for businesses.

INTEGRATED SUPPORT SERVICES FOR ENTERPRISE GROWTH

All kinds of difficulties are endured when running a business: regulation, investment, export, employment, etc.

KICOX brings various support services together to comprehensively solve business difficulties. Companies can get comprehensive service support with a single inquiry to develop their competitiveness.



Integrated support platform for business growth

- A single window for business support
- Cooperation with 31 organizations including listed, financial, export, trade, and guarantees
- Support for growth as a global creative innovation company.



Creating industrial complex jobs

- Training suitable manpower for each complex
- Offering employment information and holding hiring events
- Supply and demand surveys for manpower for each complex
- Local job training, career experience
- Business tours



Service support for factory establishment

- Issue factory registration Certificates
- Services for occupant businesses
- Free agency for factory authorization
- Creating and running online "Factory On" support system to make factories
- www.femis.go.kr



Solving business difficulties

Discovering and solving business difficulties through CEO visits, employee counseling, etc.



Examples of excellence

Integrated support platform for business growth



Business Matching Fair 2018

Creating industrial complex jobs



Employment Fair (2018. 9. 12)

Performance

40 export contracts signed and 43 million dollars in exports reached through Industrial Complex export support group mentoring

Employment fairs customized to suit each industrial complex, occupant manpower problems resolved and jobs created through youth internships

Employment results (holding job fairs): 6,006 people in 2015 (134 events) » 9,491 people in 2016 (222 events) » 4,062 people in 2017 (145 events)

91% of business difficulties resolved (335 regulations in 2017, 305 resolved)



We build industrial complexes that are coexisting and friendly to the environment.

DEVELOPMENT OF ECO-FRIENDLY, HIGHLY EFFICIENT INDUSTRIAL COMPLEX

KICOX improves the production environment to build eco-friendly, highly efficient industrial complexes.

We promoted construction of ecological complexes from 2005 to 2016 and have maintained an eco-friendly, highly efficient policy of greenhouse gas reduction and recycling in our complexes since 2017.

By doing so, we have reduced greenhouse gases and recycled byproducts, resulting in energy-efficient and economically improved complexes by creating a virtuous circle.



Greenhouse gas reduction and recycling

Reached greenhouse gas reduction goals by reducing SMEs greenhouse gases within complexes

- Expanded/disseminated general purpose technology with large ripple effects
- Transferred/commercialized excellent recycling technology
- Verified reduction and small and medium enterprise greenhouse gases



Energy efficiency

Minimized the energy cost for occupant businesses by promoting highly efficient renewable energy facilities

- Expanded solar power development in unused spaces within complexes
- Supported introduction of highly efficient energy equipment



Examples of excellence

Promoted and disseminated recycling project as fuel oil and renewable oil by collecting oil mist within white lead



before >> after
White lead and bad smell problems resolved

Promoted expansion of solar power development



Case of installed modules on factory (Changwon)

Performance

Supported 436 projects through constructing ecological industrial complexes, commercialized 235 (2005-2016)

Economic effects reached 2.4 trillion won, greenhouse gases reduced by 85.4 million tons

Created new investment of 133.7 billion won and 992 new jobs



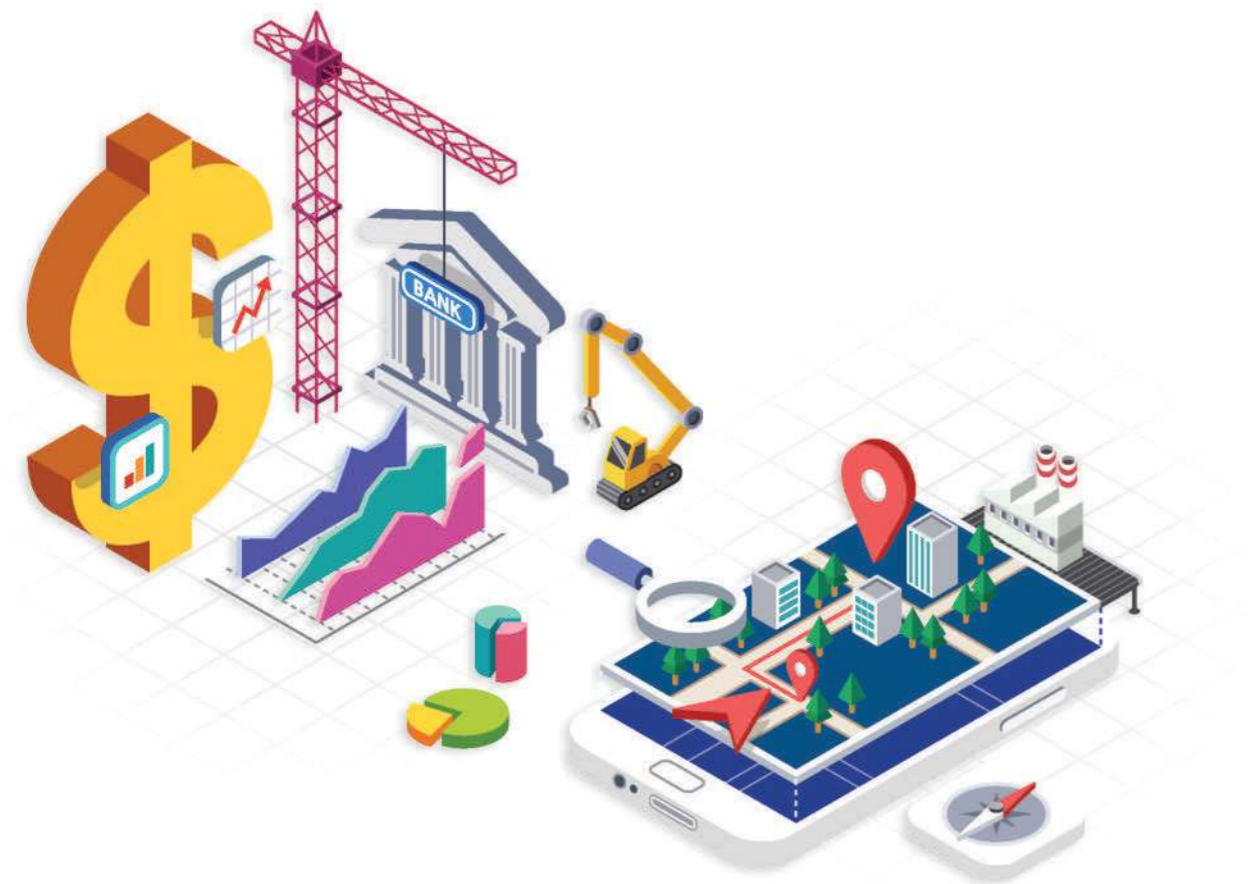
We actively support local investment for businesses to improve national competitiveness.

REINVIGORATING THE LOCAL ECONOMY

We create a business-friendly environment by building cooperative networks and investment support for balanced national development.

We have supported local investment such as reshoring companies, establishment and expansion of manufacturing facilities, since 2004

We promote business investment and local economic development that creates stable jobs.



Support funds	Tax support	Financial and I/S system support
<p>[Location] Land allotment/some purchase costs</p> <p>[Installation] Construction costs, mechanical equipment purchase costs, facilities for an improved working environment, etc.</p>	<p>[National Tax] Special tax exemption for capital gains and reduction/exemption on corporate tax</p> <p>[Local Tax] Exemption for acquisition tax and license permit tax : exemption on property tax</p>	<p>Support for long-term low interest loans for businesses moving from the capital</p> <p>Integrated data information through local investment portal site* + www.comis.go.kr</p>

Examples of excellence

Support for businesses moving the capital

Support for location and facility investment for business moving to Jeju in 2015

Foundation/expansion support

Supported local (Jincheon, Chungbuk) foundation, facility investment in 2015

Performance

1,029 companies supported from 2004-2017, total support over 1 trillion won as of June, 2017

589 companies moved from the capital, 376 local foundation/expansion investments, 38 companies returned to Korea

15 companies supported through alternative investment in Gaesong Industrial District, 11 marine equipment enterprises supported through diversification

(Effects of support) 51,774 new jobs created, total investment 17.7 trillion won



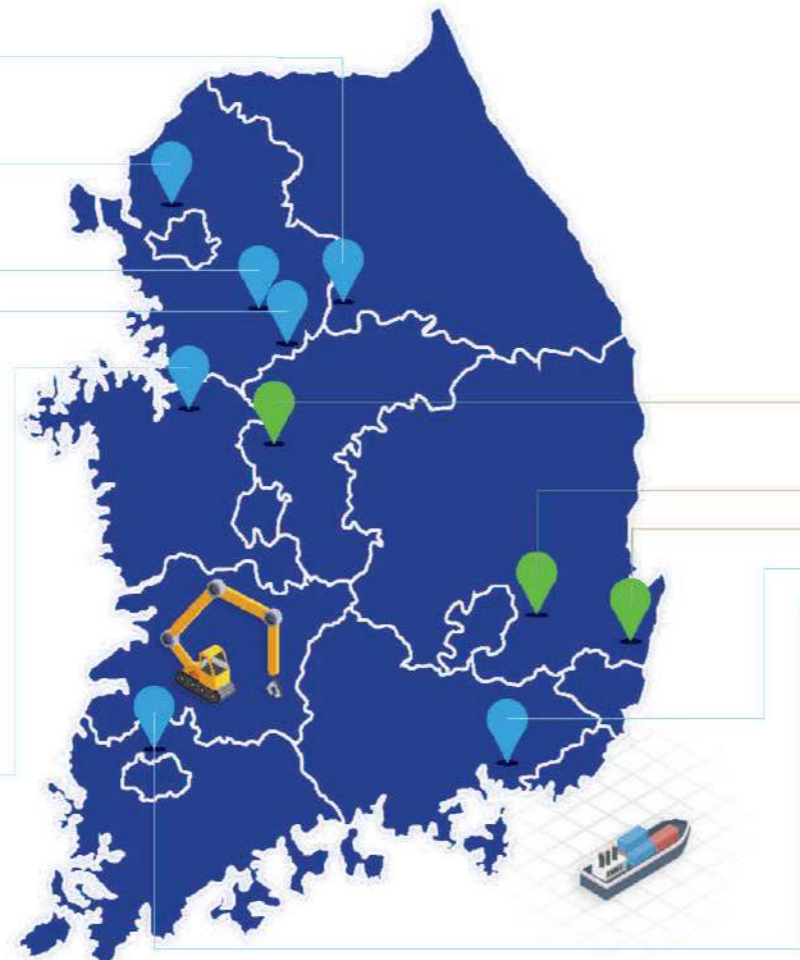
We create small yet powerful industrial complexes.

DEMAND-DRIVEN INDUSTRIAL COMPLEX DEVELOPMENT

We create customized small and medium industrial complexes reflecting corporate demand and responding to industrial changes.

We promote the development of one-stop industrial complexes by constructing an expert organization that manages industrial complex development, allotment, attraction, and support.

- Wonju Munmak Bangye General Industrial Complex**
Electronic components, medical devices, etc.
Developed area: 423,000㎡
Cost: 96.5 billion won
- Yangju Hongjuk General Industrial Complex**
Chemicals, machines, metal assembly, etc.
Developed area: 586,000㎡
Cost: 62.1 billion won
- Icheon Daewol General Industrial Complex**
Electrical equipment, foods, paper, etc.
Developed area: 60,000㎡
Cost: 11.1 billion won
- Icheon Janghowon General Industrial Complex**
Machines, metal assembly, chemicals, etc.
Developed area: 60,000㎡
Cost: 10.1 billion won
- Asan 2 Techno Valley General Industrial Complex**
Electronic components, mechanical equipment, etc.
Developed area: 1,200,000㎡
Cost: 225.6 billion won



Developing small/medium industrial complexes

Developing small/medium industrial complexes to meet demand 10 complexes built (as of 2016)



Building customized industrial complexes

Development and supply of complexes at the right time, the right place, and the right price to reflect demand for each region

Promoting development of one-stop complexes by developing complexes, attracting occupants and running an expert support organization



Developed complexes: 10 complexes 11.72 million ㎡

- ▶ Industrial complexes in development: 3 complexes 6.97 million ㎡
- ▶ Fully developed industrial complexes: 7 complexes 4.75 million ㎡

- Osong 2 Life Sciences Complex**
BT, IT, electronics, etc.
Developed area: 3,284,000㎡
Cost: 606 billion won
- Gyeongsan 4 General Industrial Complex**
Textiles, metal processing, vehicles, etc.
Developed area: 2,402,000㎡
Cost: 499.4 billion won
- Ulsan Techno Industrial Complex**
Vehicles, electronics, etc.
Developed area: 1,287,000㎡
Cost: 325.4 billion won
- Gimhae Golden Route General Industrial Complex**
Machines, electronics, etc.
Developed area: 1,524,000㎡
Cost: 572.3 billion won
- Jangseong Nano Technology Industrial Complex**
Electric, electronics, chemicals, etc.
Developed area: 902,000㎡
Cost: 125.2 billion won

- Industrial complexes in development
- Fully developed industrial complexes

Results

Attracted some 640 small/medium businesses through industrial complex development Created 24,000 jobs
Stimulated local economy with 6 trillion won in production

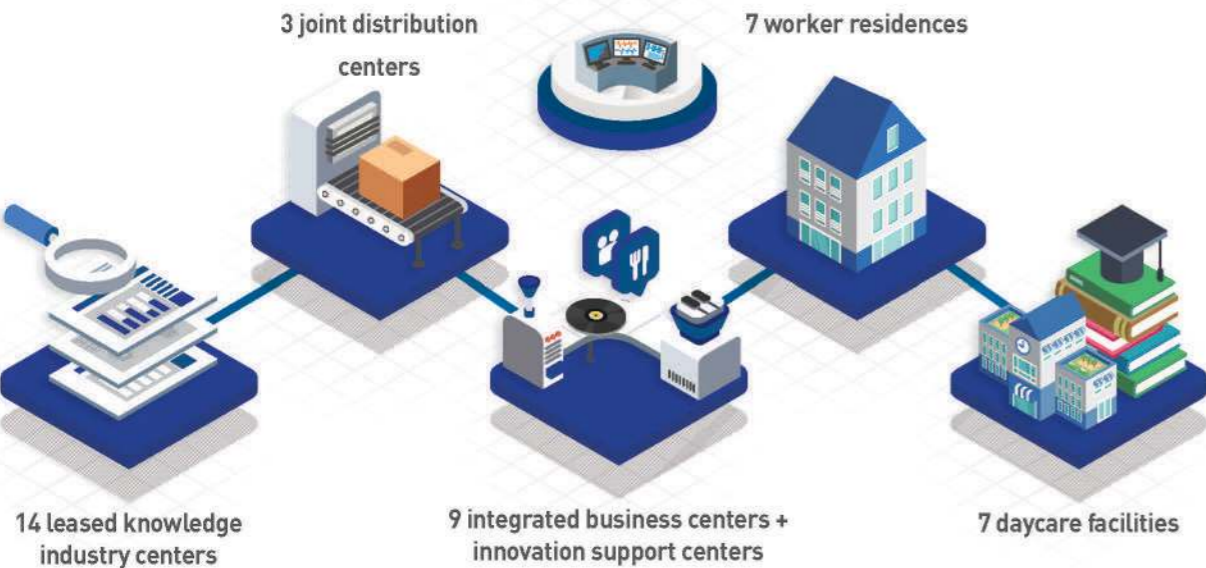


We build support facilities
to bring companies
and people together.

PROVIDING EMPLOYEE WELFARE AND FACILITIES FOR SMES

KICOX constructs a business-friendly environment and work-friendly facilities to naturally bring companies and people together to create lively, competitive industrial complexes.

We provide different types of industrial facilities, business support facilities and welfare facilities to promote small and medium businesses and stable production.



Operating knowledge industry centers

Approximately 500 knowledge
industry center occupants

Seoul, Namdong, Sihwa [2], Changwon [5],
Noksan, Gwangju Cheomdan, Gunsan,
Daebul, Kaesong



Providing business support facilities

Joint distribution centers
Sihwa, Changwon, Namdong

Production support facilities
Yeosu Pipe-Rack, Ulsan Steam Highway

Integrated business centers
Sihwa, Daegu Seongseo, Iksan

Providing innovation support centers
Bupyeong, Yeosu, Daebul, Changwon,
Yangsan, Hanam



Providing worker support facilities

Worker residences
Seoul Digital, Banwol, Changwon, Gumi,
Daebul (Foreign), Namdong

Daycare facilities
Seoul Digital [2], Namdong, Banwol,
Sihwa, Gwangju Cheomdan, Changwon

Providing industrial accident
prevention facilities
11 including Sihwa, Ansan, Cheonan
Foreign Investment, Gunsan, Gumi



Examples of excellence

Expanding industrial clusters and production space
by installing knowledge industry centers



Sihwa High-Tech Knowledge Industry Center

Worker strength training facilities to prevent
industrial accidents



Industrial accident prevention facilities
(Daebul Industrial Complex)

Performance

14 knowledge industry centers, 3 joint distribution centers, 3 integrated business centers, 6 innovation support centers
Providing/managing 7 worker residences, 7 daycare facilities
Expanded to 7 worker residences with 881 rooms and 7 daycare facilities (642 children) within industrial complexes
Founded 9 integrated business centers and innovation support centers to support research, testing, analysis
and new product manufacturing for small and medium businesses



We act as a think tank
in industrial locations.

ANALYSIS OF INDUSTRIAL TRENDS AND RESEARCH ON INDUSTRIAL POLICIES

We support making industrial location policies through
statistical research and analysis of industrial complexes,
research on local industry and business support and
advice on laws and institutional systems



Research on industrial complexes

Conducting research on pending issues
in industry location
such as the 4th industrial revolution,
new industry promotion, etc.
to help improve policies and systems



Statistical surveys/analysis of industrial complexes

Researching basic industrial
complex statistics and analyzing
industrial trends to provide base
data to promote industrial policies



Carrying out Projects Requested from both inside and outside

Reviewing on laws and
institutional System
and advising on requests
from government, the National
Assembly, etc.



Publications

Research reports



A Comparative Study on
Industrial Location System



Assessments of the last
50 years of industrial parks
in Korea

Periodicals



National Industrial
Complex Trends



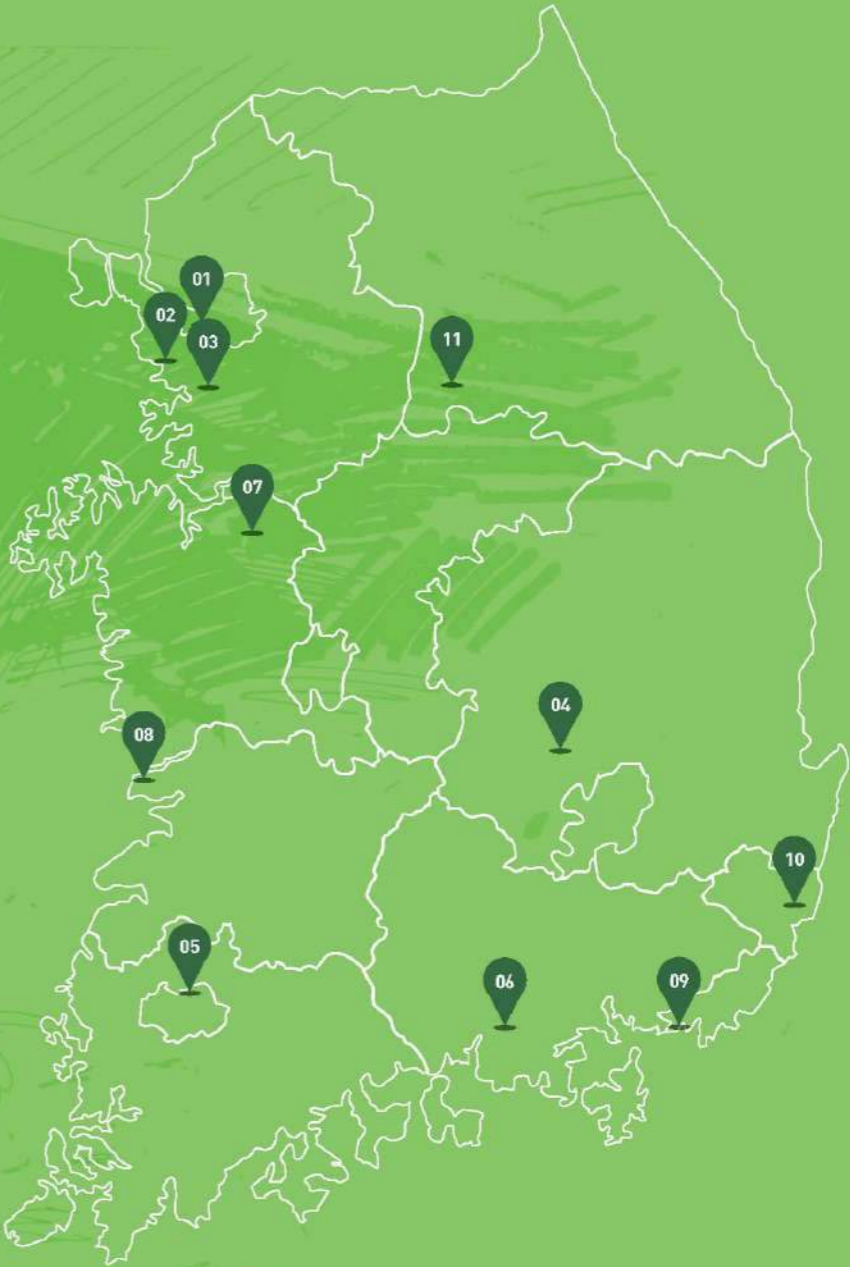
Korean Industrial Complex
Statistics

Main performance

Approximately 50 research projects conducted in the past 5 years
Korea Industrial Complex Statistics ranks 7th in number of downloads and National Industrial Complex Trend ranks 14th
among 20,783 public materials on the public data portal (www.data.go.kr)

KICOX LEADS LOCAL ECONOMIES AND DRIVING FORCES FOR FUTURE NATIONAL GROWTH

We constantly strive to consider the characteristics of each region and each industry to provide industrial complexes that increase occupant competitiveness and promote the development of the area in which the complex is located for balanced national growth.



KICOX's 11 regional headquarters support some 60 industrial complexes nationwide.

- 01 Seoul Regional Headquarters 02 Incheon Regional Headquarters 03 Gyeonggi Regional Headquarters 04 Daegu Gyeongbuk Regional Headquarters
05 Gwangju Jeonnam Regional Headquarters 06 Gyeongnam Regional Headquarters 07 Chungcheong Regional Headquarters 08 Jeonbuk Regional Headquarters
09 Busan Regional Headquarters 10 Ulsan Regional Headquarters 11 Gangwon Regional Headquarters

SEOUL AREA INDUSTRIAL COMPLEX

SEOUL
REGIONAL HEADQUARTERS
RELEVANT COMPLEXES

Korean Export (Seoul Digital)
Paju Publishing | Paju Tanhyeon
Yangju Hongjuk



01 Seoul Digital Industrial Complex 02 Paju Publishing Culture Information Industrial Complex 03 Yangju Hongjuk Industrial Complex

We strive for the driving force behind high growth: 21st century industrial complexes.

Guro Industrial Complex, Korea's first industrial complex, changed its name to **Seoul Digital Complex** in December of 2000 and has newly developed as a cutting-edge integrated urban complex for ventures, communications and the knowledge industry.

Seoul Digital Complex, Seoul's only national industrial complex, has become a model of new industrial complex success in research and development through integrated technology.
Paju Publishing Culture Information Industrial Complex is a 21st-century publishing and culture mecca, while **Paju Tanhyeon Industrial Complex** has emerged as a specialist complex for small and medium businesses.



INCHEON AREA INDUSTRIAL COMPLEX

INCHEON
REGIONAL HEADQUARTERS
RELEVANT COMPLEXES

Namdong
Korean Export (Juan/Bupyeong)



A mecca for small and medium businesses advancing as an industrial complex in the center of Northeast Asia.

Incheon Namdong Industrial Complex, a large complex specializing in small and medium businesses, is a global component cluster and a business-friendly economic center in Northeast Asia.

Juan and Bupyeong National Industrial Complexes specialize in vehicle parts and electronics.



01 Namdong National Industrial Complex 02 Bupyeong National Industrial Complex 03 Juan National Industrial Complex



GYEONGGI AREA INDUSTRIAL COMPLEX

GYEONGGI
REGIONAL HEADQUARTERS
RELEVANT COMPLEXES

- Banwol (Ansan Smart Hub)
- Sihwa (Siheung Smart Hub) | Sihwa MTV
- Asan (Poseung District)



01 Banwol National Industrial Complex 02 Sihwa National Industrial Complex 03 Asan National Industrial Complex (Poseung District)

The greatest cradle in Korea for SMEs opening the era of the west coast.

Banwol National Industrial Complex, Korea's biggest specialist complex for small and medium businesses to disperse industrial facilities and population concentrated in the capital, and Sihwa National Industrial Complex following on its heels, are occupied by cutting-edge component manufacturers with global competence to continue the era of small and medium business.



DAEGU GYEONGBUK AREA INDUSTRIAL COMPLEX

DAEGU GYEONGBUK
REGIONAL HEADQUARTERS
RELEVANT COMPLEXES

- Gumi | Daegu | Dalseong 2
- Pohang | Pohang Blue Valley
- Gumi/Gumi Components/Daegu Dalseong Foreign



Reclaiming Korea's largest cutting-edge industrial belt with a dream of semiconductors, communications and bio industry.

Gumi National Industrial Complex, called "Korea's Silicon Valley", is the largest inland industrial complex focusing on core IT industries such as digital TV, displays, and cell phones. The future of cutting-edge knowledge-based manufacturing unfolds here with IT fusion, green energy, next-generation mobile, and IT-integrated medical devices.

Daegu Dalseong 2 General Industrial Complex is an eco-friendly, cutting-edge complex centered around Daegu Technopolis and a new cutting-edge industrial center in the Nakdong River industrial belt, Gumi (components) and Daegu Dalseong Foreign Investment Zone support investment from businesses in developed countries.



01 Gumi National Industrial Complex 1, 3 02 Gumi National Industrial Complex 4, Gumi Foreign Investment Zone 03 Dalseong 2 General Industrial Complex



GWANGJU JEONNAM AREA INDUSTRIAL COMPLEX

GWANGJU JEONNAM
REGIONAL HEADQUARTERS
RELEVANT COMPLEXES

Gwangju High-Tech | Yeosu | Bitgreen | Daebul
Daebul/Woljeon Small and Medium Cooperative Foreign
Gwangyang | Donghwa/Samgye Agricultural



01 Gwangju high-tech Science Complex 02 Yeosu National Industrial Complex 03 Daebul National Industrial Complex

The optimal site for 21st-century investment in Northeast Asia, and a cradle for the development of excellent domestic and international businesses.

Yeosu National Industrial Complex, a vertically integrated center for integrated petrochemistry with oil refining and fertilizers, is developing as a global precision chemical complex, while Gwangyang Complex, which includes industries related to POSCO's Gwangyang steel plant, manages development of new materials used in cutting-edge technology and upgrades local industry.

Gwangju high-tech Science Complex leads the future of optical electronics and cutting-edge industries, while Daebul Complex is optimal for investment in international trade and a cradle of development for excellent domestic and international businesses.



GYEONGNAM AREA INDUSTRIAL COMPLEX

GYEONGNAM
REGIONAL HEADQUARTERS
RELEVANT COMPLEXES

Changwon | Jinhae | Sacheon Exclusive Lease
Sacheon 1, 2 General | Sacheon Foreign
Gimhae Golden Route | Anjeong



#1 in Korea's heavy chemical industry, soaring as a global production base.

Changwon National Industrial Complex is a cradle of the Korean mechanical industry leading advancement of its industrial structure from light to heavy chemical manufacturing and changing to a next-generation mechatronics complex.

Gimhae Golden Route Industrial Complex, Korea's first energy reduction green industrial complex, is growing as a hub of smart industry focusing on vehicles, machines, and medical treatment.



01 Changwon National Industrial Complex 02 Sacheon Industrial Complex 03 Gimhae Golden Route



CHUNGCHEONG AREA INDUSTRIAL COMPLEX

CHUNGCHEONG
REGIONAL HEADQUARTERS
RELEVANT COMPLEXES

- Asan (Godae/Bugok) | Seokmun | Osong Life Sciences
- Ochang Foreign | Cheonan Foreign | Inju Foreign
- Cheonan 5 Foreign | Jincheon Sansu | Songsan 2 | Chungju Foreign



01 Asan National Industrial Complex (Godae, Bugok World) 02 Cheonan Foreign Investment Complex 03 Osong Life Sciences Complex

The new hub of the IT industry, growing as Korea's largest R&D base.

Osong Life Sciences Complex is an integrated health and medical treatment complex where businesses in the pharmaceutical, cosmetic, medical device, health food, and BT R&D fields cluster.

Asan National Industrial Complex and Seokmun National Industrial Complex were formed to respond to insufficient capital harbors and demand for new industrial lots and comprise the west coast industrial belt zone together with the Banwol and Sihwa complexes. Cheonan, Cheonan 5, Inju, Ochang, and Jincheon Sansu Foreign Investment Zone are noted models of success in attracting global investment by providing one-stop support services for foreign investment.



JEONBUK AREA INDUSTRIAL COMPLEX

JEONBUK
REGIONAL HEADQUARTERS
RELEVANT COMPLEXES

- Gunsan | Gunsan 2 | Iksan
- Janghang National Ecology, National Food Cluster (Foreign)



Leading a new vision for balanced national development and futuristic industry.

The first stage of Gunsan industrial complex development, specializing in vehicles, Gunsan National Industrial Complex, and the 2nd stage, Gunsan 2 National Industrial Complex, are bases for new industry with distribution and port facilities.

Iksan National Industrial Complex has been reborn as a cutting-edge urban industrial complex through structurally updated work and renewal. It creates synergy through cooperation with Iksan National Food Cluster.



01-02 Gunsan 1, 2 National Industrial Complex 03 Iksan National Industrial Complex



BUSAN AREA INDUSTRIAL COMPLEX

B U S A N
REGIONAL HEADQUARTERS
RELEVANT COMPLEXES

Myeongji Noksan
Sinpyeong Jangrim Cooperation Complex



01

01-02 Myeongji Noksan National Industrial Complex 03 Sinpyeong Jangrim Industrial Complex

Growing as an international distribution center designated as a free economic zone with new port construction.

Myeongji Noksan Industrial Complex, a large complex for small and medium businesses, is becoming an international distribution center designated as a free economic zone with new port construction.

Sinpyeong Jangrim Industrial Complex, Busan's first industrial complex, is an urban complex selected as an innovative industrial complex in a Ministry of Trade, Industry and Energy competition.



02



03

ULSAN AREA INDUSTRIAL COMPLEX

U L S A N
REGIONAL HEADQUARTERS
RELEVANT COMPLEXES

Ulsan Mipo
Onsan



The eyes of the world are on the heart of vehicle manufacturing/shipbuilding/petrochemistry.

Ulsan Mipo National Industrial Complex is Korea's largest heavy chemical manufacturing facility, leading the way as a global vehicle/shipbuilding/petrochemical production base along with Onsan National Industrial Complex, which supplies non-ferrous metal.



02



03

01 Ulsan Mipo National Industrial Complex 02 Onsan National Industrial Complex 03 Ulsan Techno Industrial Complex [bird's-eye view]



01

GANGWON AREA INDUSTRIAL COMPLEX

G A N G W O N
REGIONAL HEADQUARTERS
RELEVANT COMPLEXES

Bukpyeong | Bukpyeong Region | Icheon Janghowon
Icheon Daewol | Wonju Munmak Bangye
Munmak Small and Medium Cooperative Foreign



01 Bukpyeong National Industrial Complex 02 Wonju Munmak Bangye General Industrial Complex (bird's-eye view)
03 Icheon Janghowon General Industrial Complex (bird's-eye view)

Standing first as the industrial center
of Northeast Asia on the way
to becoming a powerful country in bio products.

Bukpyeong National Industrial Complex promotes East Sea container docking facility and is designated as a free trade zone, becoming reborn as a base for regional economic development and promoting international distribution.

Wonju Munmak Bangye Industrial Complex was created as an environmentally friendly industrial complex through systematic, planned development while avoiding environmental harm.



With KICOX

WE TAKE THE LEAD IN JOB CREATION AND NATIONAL INDUSTRIAL DEVELOPMENT

BY SUPPORTING BUSINESS GROWTH
AND DEVELOPING AND MANAGING OPTIMIZED INDUSTRIAL COMPLEXES.

KICOX practices sustainable management to satisfy clients with its goal of
business and citizen trust.
We take an interest in social responsibility and work hard to contribute to society
in order to prepare for the future.

With KICOX

Organization status

KICOX was founded in 1964 as an organization that specializes in managing and supporting industrial complexes by integrating 5 regional industrial complex corporations.

Purpose of establishment

To develop and manage industrial complexes and support businesses' industrial activities

※Relevant law: "The Industrial Cluster Development and Factory Establishment Act", Article 45.9

Organization type

Consignment quasi-government organization

※Relevant law: "Act on the Management of Public Institutions", Article 5

Related industrial complexes

Related complexes: 63 in all

There is a total of 1,158* industrial complexes across Korea (as of the end of '17), and KICOX manages 63

*42 national complexes, 327 general complexes, 21 cutting-edge urban complexes, 468 agricultural complexes

as of the end of 2017	
Category	Complex name
33 nationals	Korea Export (Seoul), Paju Publishing, Paju Tanhyeon, Bupyeong Jua, Namdong, Banwol, Sihwa, Sihwa MTV, Asan, Seokmun, Osong Life, Gumi, Daegu, Changwon, Anjeong, Ulsan Mipo, Onsen, Myeongji Noksan, Gwangju Cutting-Edge, Daebul, Gwangyang, Yeosu, Gunsan, Gunsan 2, Bukpyeong, Iksan, National Food Cluster, Pohang, Pohang Blue Valley, Jinhae, Bitgreen, Janghang National Ecology, Gyeongnam Aviation
13 general	Yangju Hongjuk, Asan 2 Techno Valley, Dalseong 2, Sinpyeong Jangrim, Gimhae Golden Route, Sacheon Lease, Icheon Janghowon, Bukpyeong Regional, Wonju Munmak Bangye, Icheon Daewol, Osong 2 Life Sciences, Sacheon 1/2 General Industrial Complex
15 foreign investment	Gumi (including Gumi Components), Daegu Dalseong, Daebul, Sacheon, Ochang, Inju, Cheonan, Cheonan 5, Woljeon Small and Medium Cooperative, Munmak Small and Medium Cooperative, Jincheon Sansu, Songsan 2, National Food Foreign Investment, Chungju, Songsan 2-1
2 agricultural	Donghwa, Samgye

※National complexes (Department of Trade and Industry (Ministry of Culture, Ministry of Welfare), foreign investment zones/general agricultural complexes administered by local government)

Occupants and operation

as of the end of 2016				
Category	Occupant	Production	Export	Employment
KICOX managed complexes (Ratio among nationwide complexes)	43,381 companies	521 trillion won	\$179.3 billion	951,813 people
	52.9%	52.9%	48.6%	47.8%
(Ratio among Korean manufacturing industry)				
All Korean industrial complexes	82,042 companies	985 trillion won	\$368.7 billion	1,991,348 people
	416,493 companies	1,416 trillion won	\$493.5 billion	4,045,121 people

※Here, the number of manufacturing industry occupants means "total number of business occupants - number of non-manufacturing firms"

※Employment is "Total persons employed - non-manufacturing workers"

Industrial complex development

Developed complexes: 10 complexes 11.72 million m², 2.56 trillion won

Industrial complexes in development: 3 complexes 6.97 million m², 1.43 trillion won

Fully developed industrial complexes: 7 complexes 4.75 million m², 1.13 trillion won


as of the end of 2017							
	Complex name	Area	Period	Cost Invested public costs (Total cost)	Sales rate	Industries attracted	Remarks
3 in development	Osong 2 Life Science Complex	3,280,000m ²	'07~'18 (12 years)	6,060 (9,323)	79%	IT/BT, pharmaceuticals Bio, etc.	KICOX (65%), Chungbuk Development Corporation (35%)
	Ulsan Techno Industrial Complex	1,290,000m ²	'10~'18 (9 years)	3,254 (3,736)	98%	New and renewable energy, integrated components, etc.	KICOX (90%), Ulsan Urban Innovation Corporation (10%)
	Gyeongsan 4 General Industrial Complex	2,400,000m ²	'13~'20 (8 years)	4,994 (4,994)	2018 Planned lots	Mechanical equipment, vehicles, electric equipment, textiles, etc.	KICOX (100%)
	Subtotal (3)	6,970,000m ²	-	14,308 (18,053)*	79%	-	-
7 fully developed	Icheon Janghowon General Industrial Complex	60,000m ²	'07~'09 (3 years)	101 (101)	100%	Machines, metal assembly, chemicals, etc.	KICOX (100%)
	Icheon Daewol General Industrial Complex	60,000m ²	'09~'12 (4 years)	111 (111)	100%	Electrical equipment, foods, paper, etc.	KICOX (100%)
	Yangju Hongjuk General Industrial Complex	590,000m ²	'07~'13 (7 years)	621 (2,071)	98%	Machines, electronics, metal assembly, etc.	KICOX (30%), Yangju City (10%), Gyeonggi Urban Innovation Corporation (60%)
	Wonju Munmak Bangye General Industrial Complex	420,000m ²	'07~'13 (7 years)	965 (965)	72%	Electronics, vehicle parts, medical devices, etc.	KICOX (100%)
	Gimhae Golden Route General Industrial Complex	1,520,000m ²	'07~'14 (8 years)	5,723 (5,723)	97%	Machines, electronics, cutting-edge industries, etc.	KICOX (100%)
	Asan 2 Techno Valley	1,200,000m ²	'09~'15 (7 years)	2,526 (2,526)	94%	Vehicles, electronics, mechanical equipment, etc.	KICOX (100%)
	Jangseong Nano Technology Industrial Complex	900,000m ²	'11~'16 (6 years)	1,252 (1,252)	94%	Electronics, machines, metal, etc.	KICOX (100%)
	Subtotal (7)	4,750,000m ²	-	11,299 (12,749)*	92.5%	-	-
	Total (10)	11,720,000 m ²	-	25,607 (30,802)*	85.7%	-	-

※Costs in () are total costs including costs reached by local government (regional corporations)

With KICOX

Headquarters and branch addresses

Category	Address
Headquarters	41068 39 Cheomdan-ro, Dong-gu, Daegu [Sinseo-dong 1144]
Business Growth Training Group	80379 29 32-gil, Digital-ro, Guro-gu, Seoul [#188-5 Guro 3-dong] KICOX Venture Center 13th floor
Jangseong Office	61008 #402 B-dong, 313 Cheomdangwagi-ro [Daechon-dong], Buk-go, Gwangju
Osong Group	28164 171-1 Bongsan-ro, Osong-eup, Heungdeok-gu, Cheongju, Chungcheongbuk-do
Ulsan Group	680-170 #610 Duwang-dong, Nam-gu, Ulsan
Gyeongsan Group	41068 5th floor, MG Building, 475 Gongdan-ro, Jinryang-eup, Gyeongsan, Gyeongsangbuk-do
Seoul Regional Headquarters	08379 29 32-gil, Digital-ro, Guro-gu, Seoul [#188-5 Guro 3-dong] KICOX Venture Center 13th, 14th, 15th floor
Paju Yangju Branch	10881 145 Hoedong-gil, Paju, Gyeonggi-do
Incheon Regional Headquarters	21633 217 Namdongdae-ro [Gojan-dong] [66BL], Namdong-gu, Incheon
Juan Bupyeong Branch	22829 #72 Gajeeul-ro [Gajwa-dong], Seo-gu, Incheon
Bupyeong Office	21315 #116, 1st floor, Namgwang Centrex Knowledge Industry Center, 301 Bupyeong-daero [Cheongcheon-dong], Bupyeong-gu, Incheon
Gyeonggi Regional Headquarters	15433 57 Dongsan-ro [773-2 Wonsi-dong], Danwon-gu, Ansan, Gyeonggi-do
Siheung Branch	15073 237 Sangdaehak-ro [Siheung Business Center 9th floor], Siheung, Gyeonggi-do
Pyeongtaek Branch	17959 38 184-beongil [3rd floor], Poseung Integrated Support Center, 576-4 Manho-ri, Pyeongtaekhan-gu, Poseung-eup, Pyeongtaek, Gyeonggi-do
Daegu Gyeongbuk Regional Headquarters	39268 127 Suchul-daero, Gumi, Gyeongsangbuk-do
Daegu Branch	42704 10th floor, Daegu Business Center, 217 Seongseogongdan-ro, Dalseo-gu, Daegu
Dalseong Office	43013 109 Dalseong 2-cha dong 1-ro [3rd floor], Guji-myeon, Dalseong-gun, Daegu
Pohang Office	37871 4th floor, Pohang Steel Industry Management Complex, 362 Cheolgang-ro, Nam-gu, Pohang, Gyeongsangbuk-do
Gwangju Jeonnam Regional Headquarters	61008 5th floor, High-tech Center, 313 Cheomdangwagi-ro [Daechon-dong], Buk-go, Gwangju
Daejeon Branch	58453 163 Nabul-ro, Samho-eup, Yeongam-gun, Jeollanam-do
Jeju Office	63217 5th floor, Jeju Small Business Integrated Support Center, 473 Yeonsam-ro, Jeju City, Jeju
Yeosu Gwangyang Branch	59626 #211 Jeonnam University Yeosu Campus Engineering Hall, Daehak-ro 50, Yeosu, Jeollanam-do
Gwangyang Office	57801 3rd floor, Posco Steel Hall, 12-14 Huimang-gil, Gwangyang, Jeollanam-do
Gyeongnam Regional Headquarters	51535 754 Changwon-daero [Wadong], Seongsan-gu, Changwon, Gyeongsangnam-do
Sacheon Branch	52528 8 Gongdan 1-ro, Sanam-myeon, Sacheon, Gyeongsangnam-do
Gimhae Branch	50969 #704 Cheomdameweisengmyeong Techno Town, 88 Somang-gil, Juchon-myeon, Gimhae, Gyeongsangnam-do
Chungcheong Regional Headquarters	31093 2nd floor, Cheonan Integrated Support Center, 90-27 3 Gongdan 2-ro [Seongseong-dong], Seobuk-gu, Cheonan, Chungcheongnam-do
Chungbuk Branch	28399 6th floor, Chungbuk Small Business Promotion Center, 50 Pungsan-ro [Bagyeong-dong], Heungdeok-gu, Cheongju, Chungcheongbuk-do
Dangjin Branch	31721 3rd floor, Bokjigwan, 53-13 Bugokgongdan 4-gil, Songak-eup, Dangjin, Chungcheongnam-do
Jeonbuk Regional Headquarters	54001 169 Sandannambuk-ro [Osikdo-dong], Gunsan, Jeollabuk-do
Iksan Branch	54630 5th floor, Iksan Integrated Business Center, 370 Dongseo-ro [Yeongdeung-dong], Iksan, Jeollabuk-do
Busan Regional Headquarters	46754 2nd floor, Gyeongnam Bank, 5 Noksansandan 335-ro [Songjeong-dong], Gangseo-gu, Busan
Saha Office	49477 #104, 1st floor, 17 Hasinjungang-ro 27-gil, Saha-gu, Busan
Ulsan Regional Headquarters	44713 5th floor, 83 Jeongdong-ro [Samsan-dong], Nam-gu, Ulsan
Gangwon Regional Headquarters	26403 5th floor, Gangneung Wonju University School of Science and Technology Hall 3 [W15], 150 Namwon-ro, Heungseop-myeon, Wonju, Gangwon
Donghae Branch	25798 1st floor, Donghae Free Trade Zone Management Service, 177 Gongdan 1-ro, Donghae, Gangwon-do

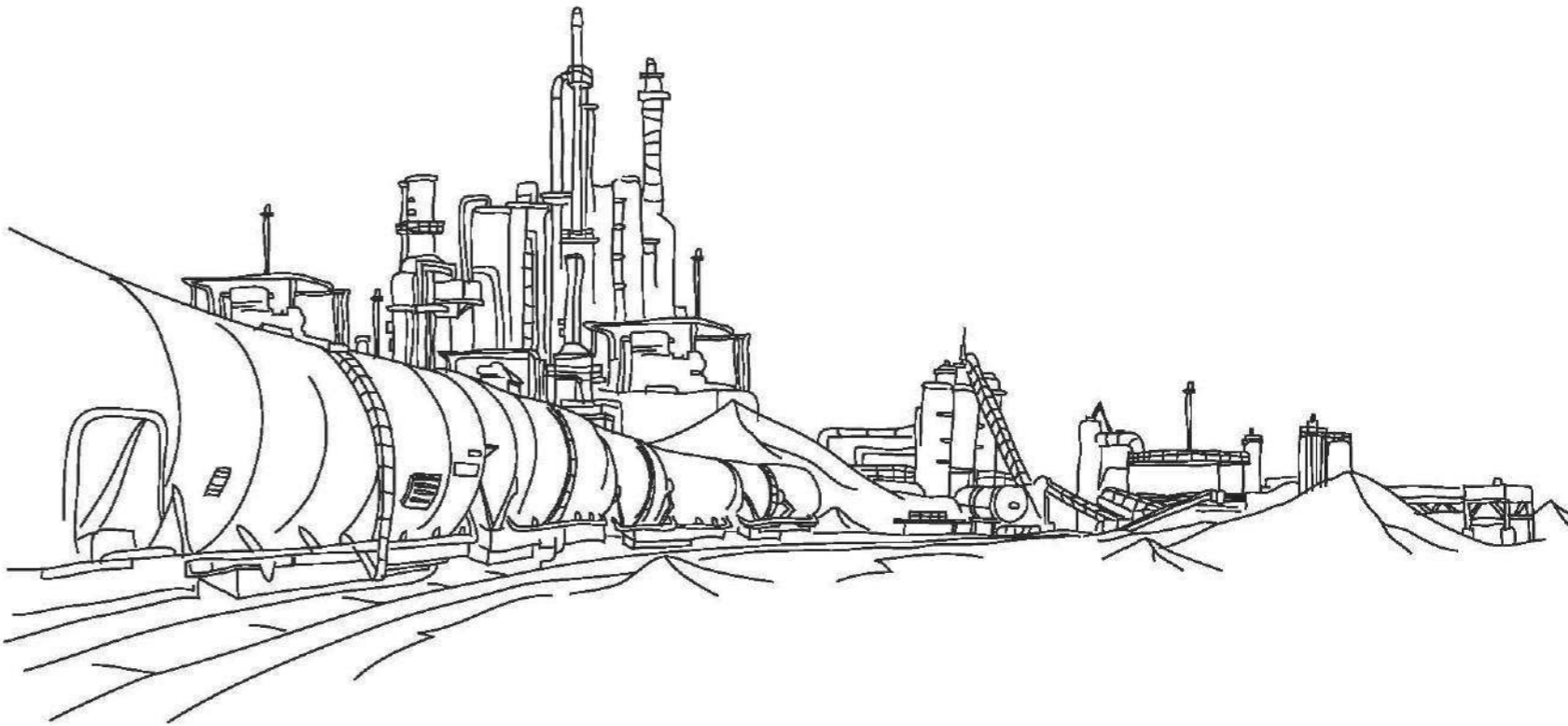
 Call center nationwide +82-1688-7277

KICOX WILL BRING INNOVATION TO INDUSTRIAL COMPLEX AND ENERGY TO COMPANIES.

WE WILL BUILD A VIRTUOUS CYCLE THAT BENEFITS PEOPLE

TODAY AND CONTRIBUTES TO THE HAPPINESS OF OUR NEXT GENERATION

BY COMMITTING OURSELVES TO SUSTAINABLE GROWTH.



KOREA INDUSTRIAL COMPLEX CORP.

39 Cheomdan-ro, Dong-gu, Daegu 41068 Tel. +82-70-8895-7000 <http://www.kicox.or.kr>